

State of Wyoming Corner Record

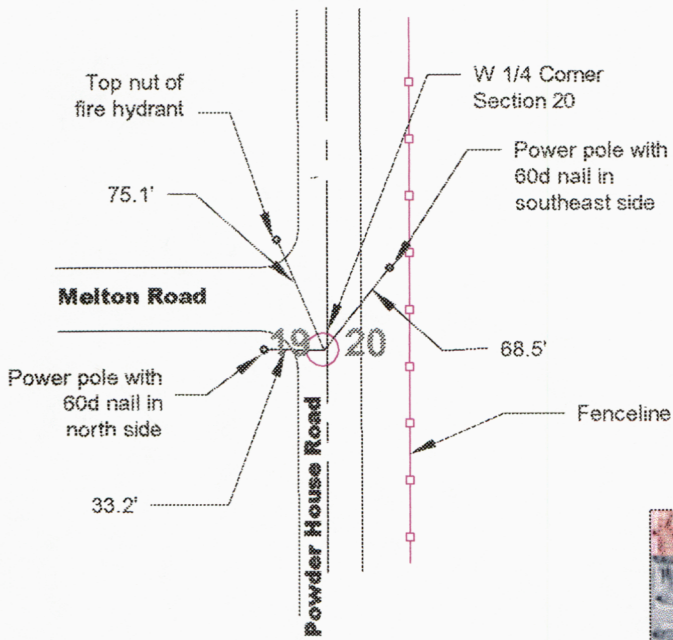
(In compliance with the CORNER PERPETUATION AND FILING ACT, Wyoming Statutes, 1997, Section 33-29-140 et. seq., and the Rules and Regulations of the Board of Registration for Professional Engineers and Professional Land Surveyors)

Reverse side of this form may be used if more space is needed.

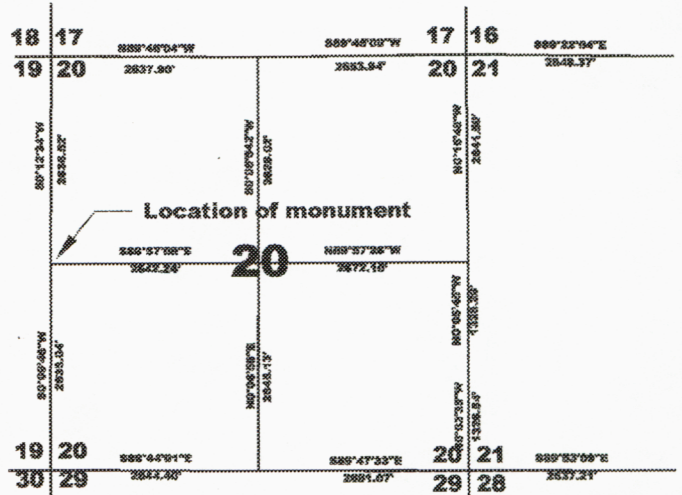
Record of original survey and citation of source of historical information (if corner is lost or obliterated). Description of corner monumentation evidence found and/or monument and accessories established to perpetuate the location of this corner. Sketch of relative location of monument, accessories, and reference points with course and distance to adjacent corner(s) (if determined in this survey). Method and rationale for reestablishment of lost or obliterated corner.

Record: Set Granite Boulder 17 x 10 x 6

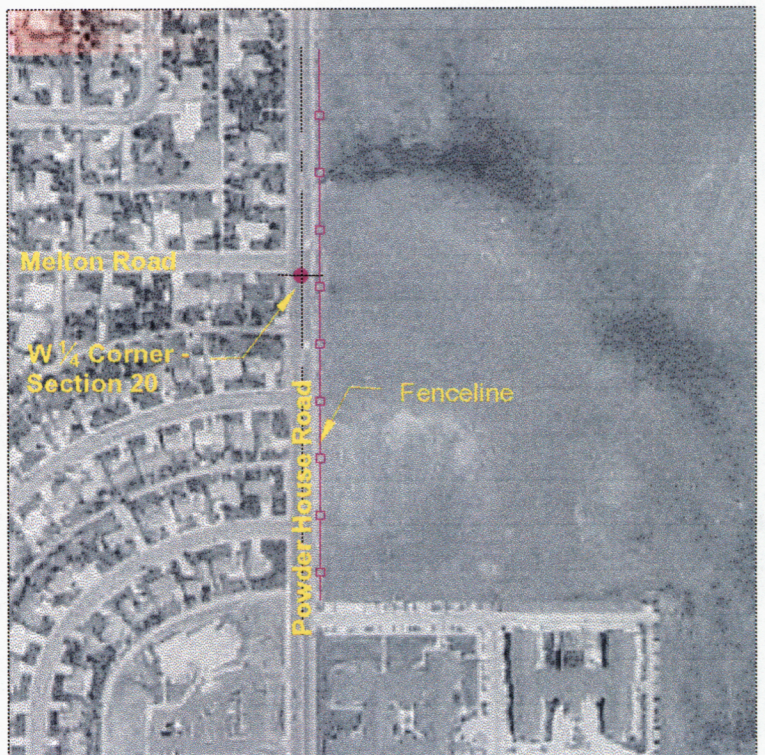
Found: Damaged 2" Aluminum cap with inscription worn off as shown below



Corner Ties Detail



Cap Stamping Detail



Vicinity Map

Date of Field Work: April 2002 Office Reference: 2310 - Storey Blvd

CROSS INDEX DIAGRAM

	1	2	3	4	5	6	7	8	9	10	11	12	13	14	15	16	17	18	19	20	21	22	23	24	25
A																									
B																									
C		6																							
D			5																						
E				4																					
F					3																				
G			7																						
H				8																					
I					9																				
J						10																			
K							11																		
L								12																	
M		18																							
N			17																						
O				16																					
P					15																				
Q						14																			
R							13																		
S								19																	
T									20																
U										21															
V											22														
W												23													
X													24												
Y														25											
Z															26										
	1	2	3	4	5	6	7	8	9	10	11	12	13	14	15	16	17	18	19	20	21	22	23	24	25

Firm/Agency, Address

Washington Infrastructure Services

5920 Yellowstone Road

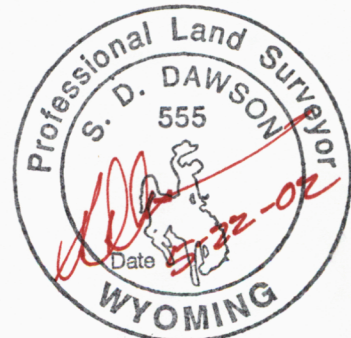
Cheyenne, Wyoming 82009

Telephone Number: 307-634-1101

This corner record was prepared by me or under my direction and supervision.

SEAL & SIGNATURE

[Handwritten Signature]

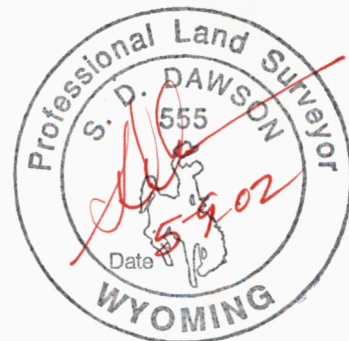
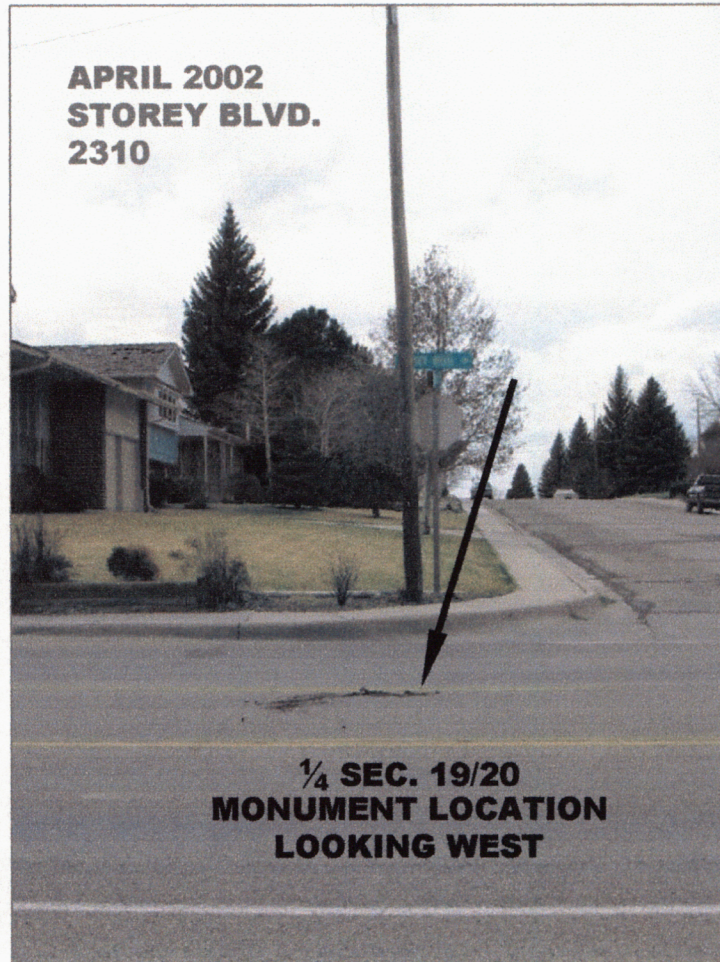
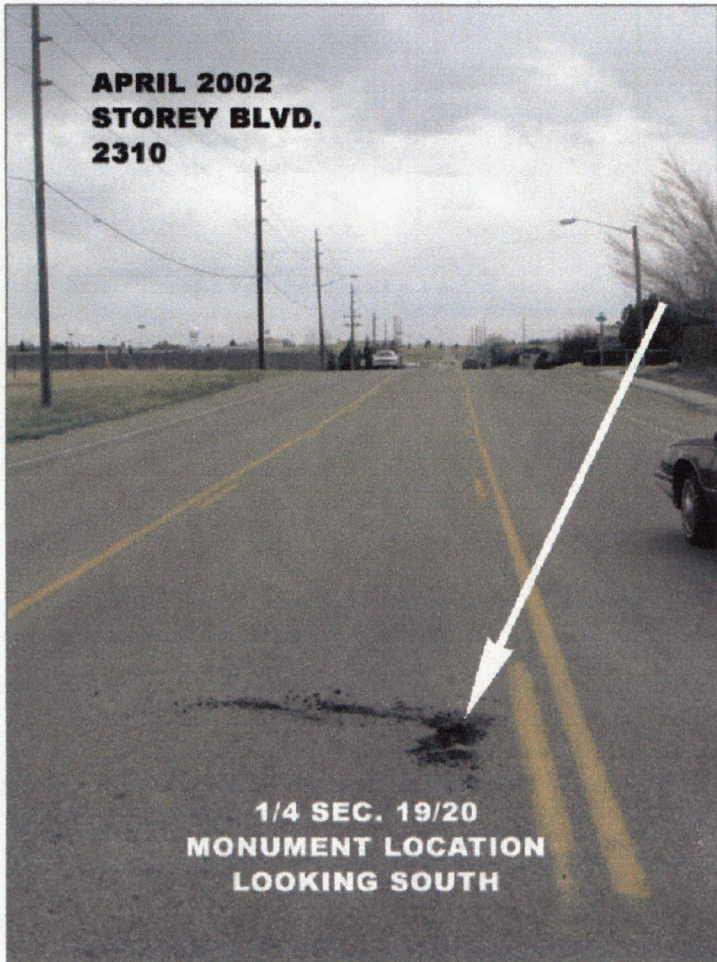
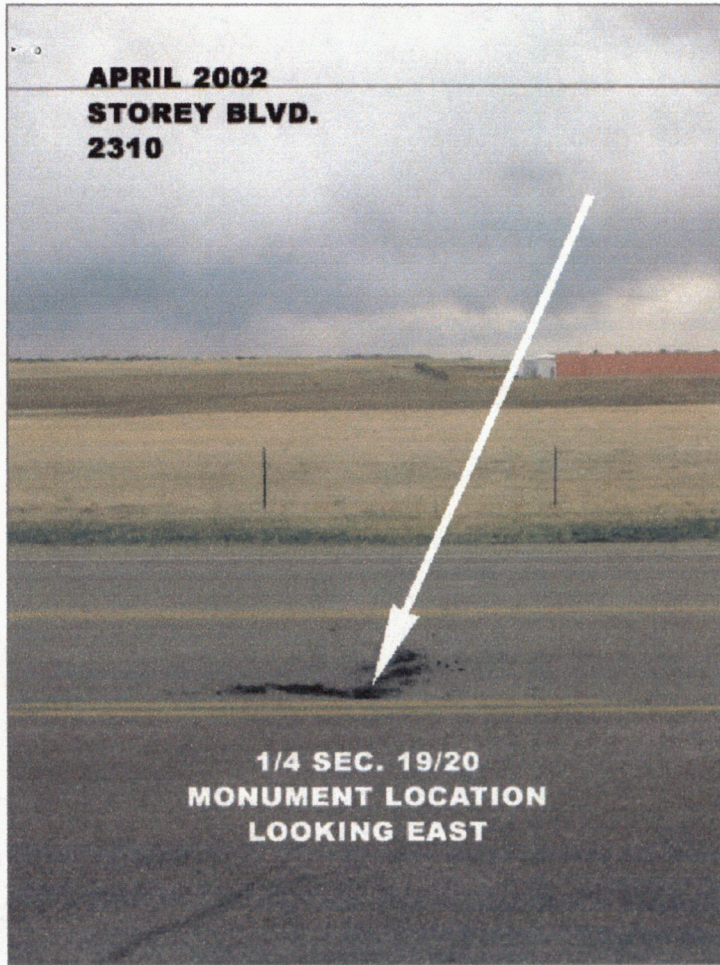
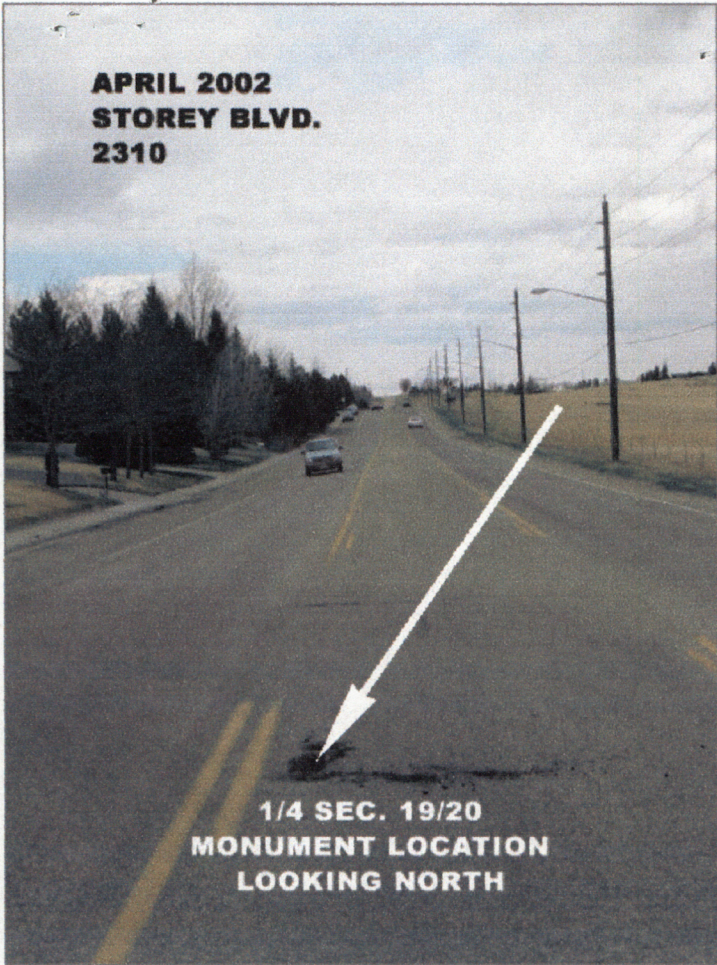


Corner Name: W 1/4 Corner of Section 20
SBRPEPLS/PLSW: March 1994; PLSW January 1998

Section: 20 T 14N R 66W ; 6th P.M. Cross-Index No.: P-5



RECORDED 12/19/2002 AT 1:54 PM REC# 339039 X# 1691 PG# 1391
EBRA K. LATHROP, CLERK OF LARAMIE COUNTY, WY PAGE 1 OF 2



W 1/4 Corner of Section 20 T14N R66W 6th INDEX NO:P-5

RECORDED 12/19/2002 AT 1:54 PM REC# 339039 BK# 1691 PG# 1392
 NEBRA K. LATHROP, CLERK OF LARAMIE COUNTY, WY PAGE 2 OF 2